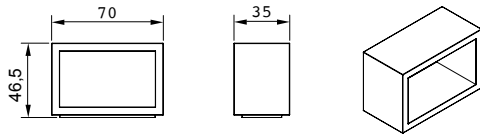


Dimensions in cm

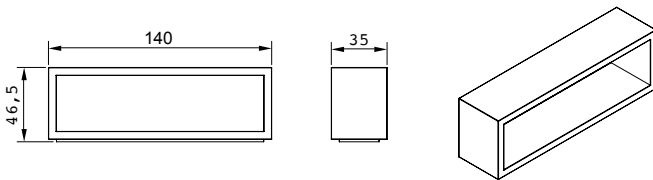


**211 Small Open Unit**

- Wood (cat A)
- Wood (cat B)
- Wood (cat C)
- Lacquer Matte
- Lacquered Gloss



This modular shelving system is the ideal fix for your space problems. It combines large and small modules to create a solution that is tailored to you, and our different finishes allow you to make something that is truly unique. With 4cm thickness, the 211 will create an aesthetic impact in any room.



**211 Big Open Unit**

- Wood (cat A)
- Wood (cat B)
- Wood (cat C)
- Lacquer Matte
- Lacquered Gloss

We have also designed a closed module option, so that you can mix & match it with the open shelves or use as a standalone piece, such as a bedside table.

+ info  
www.hmdfurniture.com

Wood Veneer Options

Depending on the furniture piece you choose, the intensity of the varnish may vary. Sometimes it may have a more matte finish, while other times it could be shinier.



Suggested RAL colors  
Other colors upon request

